

Section A

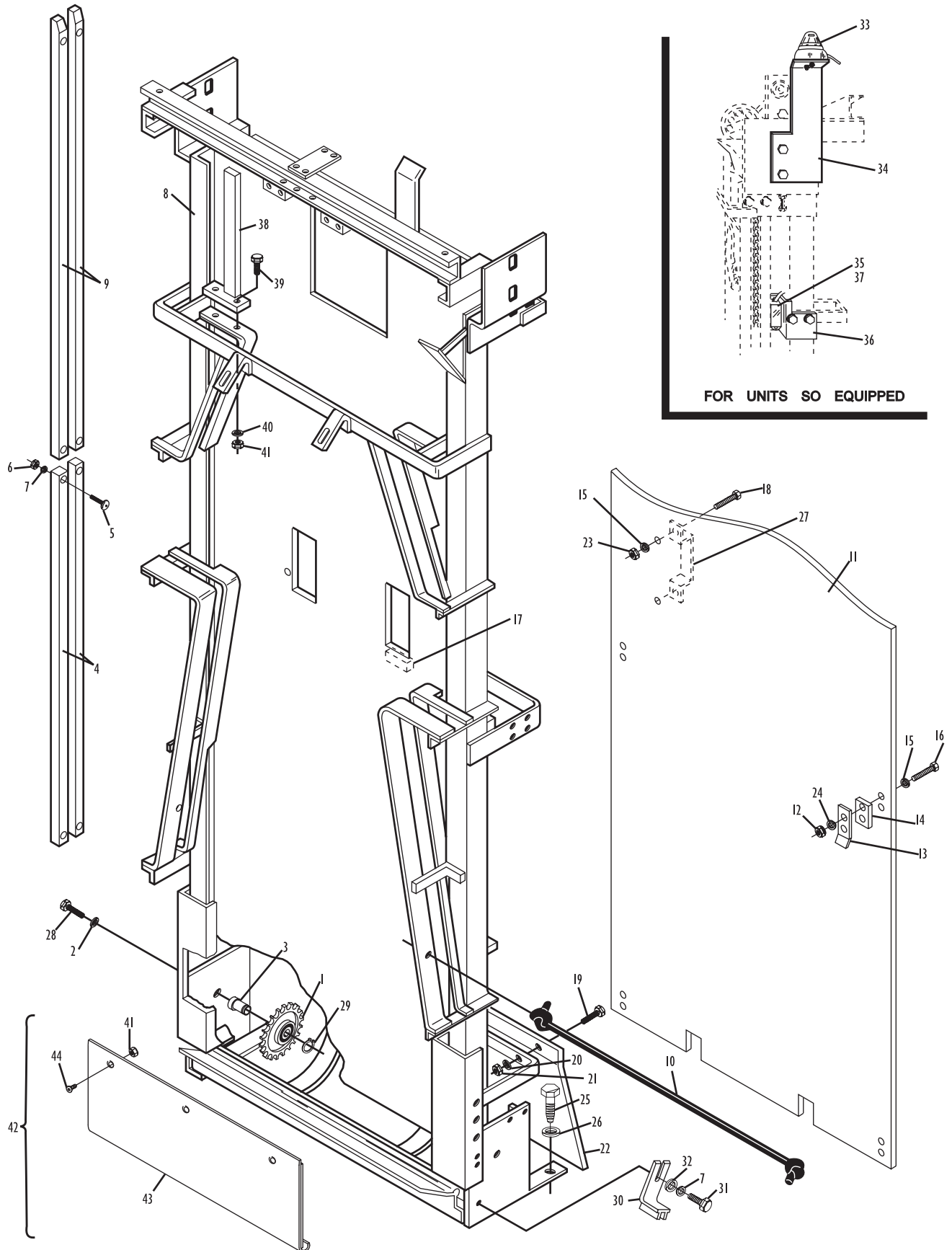
ELEVATOR

Index No.	Part No.	Description
1.	47-011053-004	Deflection Chain Gear with Bearing Complete
2.	11-051772-001	Lockwasher (12 mm)
3.	47-011130-004	Bearing Bolt
4.	47-011245-003	Chain Guide (Lower)
5.	11-052601-001	Carriage Bolt (8 mm x 30 mm)
6.	11-051704-001	Hex Nut (8 mm)
7.	11-051770-001	Lockwasher (8 mm)
8.	47-011135-000	Elevator Frame with Felt Backing
9.	47-011276-003	Chain Guide (Upper)
10.	11-053583-000	Rubber Cord (1.1 m)
11.	47-011775-003	Elevator Guard Complete
12.	11-051742-001	Locknut (5 mm)
13.	47-013651-003	Holding Bracket
14.	N.A.	Spacer
15.	11-052054-001	Flat Washer (5.3 mm x 15 mm x .8 mm)
16.	11-051004-001	Hex Hd. Cap Screw (5 mm x 25 mm)
17.	47-011134-004	Rubber Stop
18.	11-051003-001	Hex Hd. Cap Screw (5 mm x 16 mm)
19.	11-051035-001	Hex Hd. Cap Screw (6 mm x 16 mm)
20.	11-051769-001	Lockwasher (6 mm)
21.	11-051702-001	Hex Nut (6 mm)
22.	47-011518-003	Elevator Foot Guard
23.	11-051701-001	Hex Nut (5 mm)
24.	11-051768-001	Lockwasher (5 mm)
25.	11-053302-001	Wood Lag Screw (10 mm x 40 mm)
26.	11-052028-001	Flat Washer (10.5 x 25 mm x 2 mm)
27.	47-013636-004	Handle
28.	11-051062-001	Hex Hd. Cap Screw (12 mm x 25 mm)
29.	11-051852-001	Retaining Ring (17 mm)
30.	47-021520-004	Transport Band Hold Down Clamp
31.	11-051010-001	Hex Hd. Cap Screw (8 mm x 20 mm)
32.	11-052019-001	Flat Washer (8.4 mm x 25 mm x 2 mm)
33.	47-013817-004	Trouble Light Assembly
	*47-223170-000	Lamp Only
34.	47-012303-004	Trouble Light Bracket
35.	99-050229-004	Switch (Red Box)
36.	47-011239-004	Switch Bracket
37.	47-243026-004	Switch (Silver Box)
38.	47-012149-003	Shovel Alignment Bracket
39.	11-051015-001	Hex Hd. Cap Screw (8 mm x 25 mm)
40.	11-052006-001	Flat Washer (8 mm)
41.	N.A.	Locknut (8 mm)
42.	47-014200-004	Elevator Repair Kit
43.	N.A.	Repair Kit Plate
44.	N.A.	Socket Hd. Screw (8 mm x 16 mm)

N.A. = No Longer Available

** Not Illustrated*

Elevator Frame Assembly



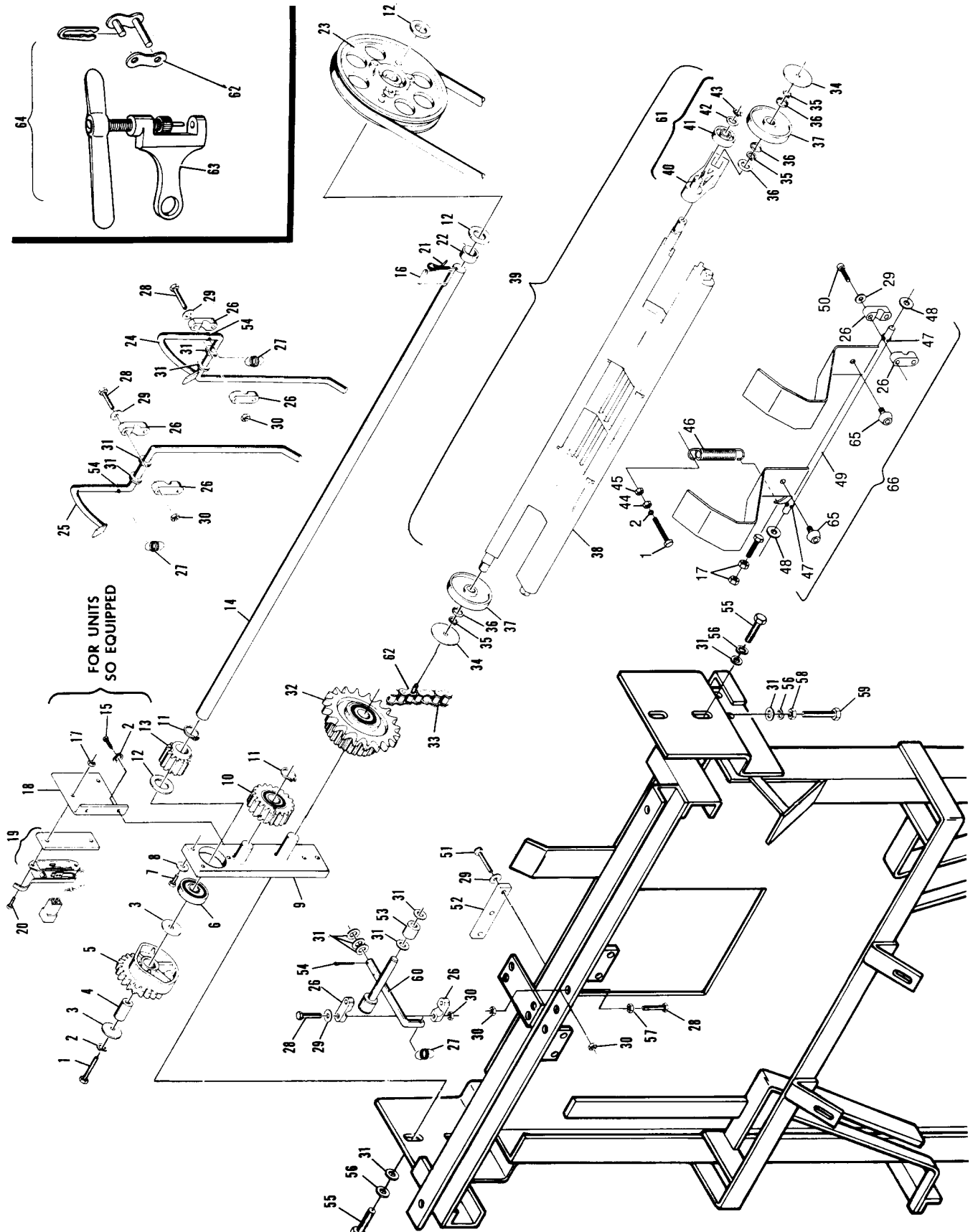
Elevator Frame Assembly

Index No.	Part No.	Description	Index No.	Part No.	Description
1.	11-051007-001	Hex Hd. Cap Screw (6 mm x 40 mm)	33.	47-013788-004	5/8" Chain with Shovel Pins Complete (4318 mm Long)
2.	11-051769-001	Lockwasher (6 mm)	34.	47-011241-004	Spacer Washer (40 mm x 5.1 mm)
3.	11-052010-001	Flat Washer (6 mm x 25 mm x 1.8 mm)	35.	11-051851-001	Retaining Ring (12 mm)
4.	47-011240-004	Spacer	36.	11-052001-001	Flat Washer (12 mm x 16 mm x 2 mm)
5.	47-010698-003	Toothed Wheel with Cam	37.	47-011047-004	Nylon Track Wheel (large)
6.	11-430007-000	Ball Bearing for Bearing Plate (6203ZZ)	38.	47-011049-001	Pin Shovel Only
7.	11-051001-001	Hex Hd. Cap Screw (6 mm x 12 mm)	39.	47-013532-000	Pin Shovel Complete
8.	11-052022-001	Flat Washer (6.4 mm x 14 mm x 1 mm)	40.	47-011048-004	Pivoting Lever
9.	47-011125-003	Bearing Plate Complete	41.	N.A.	Nylon Track Wheel (small)
10.	47-011050-004	Carrier Wheel with Bearing Complete	42.	N.A.	Flat Washer (10.5 mm x 21 mm x 2mm)
11.	11-051852-001	Retaining Ring (17 mm)	43.	N.A.	Retaining Ring (10 mm)
12.	11-052053-001	Flat Washer (17 mm x 30 mm x 1.6 mm)	44.	N.A.	Locknut (6 mm)
13.	47-011045-004	Drive Gear	45.	11-051702-001	Hex Nut (6 mm)
14.	47-011127-003	Drive Spindle	46.	46-050255-004	Spring
15.	11-051008-001	Hex Hd. Cap Screw (6 mm x 10 mm)	47.	11-051795-001	Split Pin (1.6 mm x 16mm)
16.	11-053501-000	Key (5 mm x 5 mm x 25 mm)	48.	11-052006-001	Flat Washer (8.4 mm x 20 mm x 2 mm)
17.	11-051741-001	Locknut (4 mm)	49.	47-011133-003	Ejecting Flap
18.	47-011239-004	Switch Mounting Plate	50.	11-051542-001	Socket Hd. Cap Screw (5 mm x 25 mm)
19.	99-050229-004	Switch Complete	51.	11-051522-001	Socket Hd. Cap Screw (5 mm x 16 mm)
20.	11-052201-001	Std. Machine Screw (4 mm x 10 mm)	52.	47-010061-004	Rubber Plate
21.	11-054301-001	Hitch Pin (3 mm x 62 mm)	53.	47-010059-004	Nylon Bumper
22.	47-011524-004	Spacer	54.	11-051793-001	Split Pin (16 mm x 2 mm)
23.	47-012411-003	Grooved Pulley	55.	11-051015-001	Hex Hd. Cap Screw (8 mm x 25 mm)
24.	47-011145-002	Pin Turn Lever (right-hand)	56.	11-051770-001	Lockwasher (8 mm)
25.	47-011146-002	Pin Turn Lever (left-hand)	57.	11-051701-001	Hex Nut (5 mm)
26.	46-030120-004	PVC Bearing	58.	11-051704-001	Hex Nut (8 mm)
27.	47-011147-004	Tension Spring	59.	11-051011-001	Hex Hd. Cap Screw (8 mm x 50 mm)
28.	11-051002-001	Hex Hd. Cap Screw (5 mm x 30mm)	60.	47-010053-003	Cross Lever
29.	11-052005-001	Flat Washer (5.3 mm x 10 mm x 1 mm)	61.	47-013533-009	Pivoting Lever Assembly
30.	11-051742-001	Locknut (5 mm)	62.	47-013871-004	Master Link with Long Pin
31.	11-052003-001	Flat Washer (8.4 mm x 17 mm x 1.6 mm)		11-600500-000	Standard Master Link
32.	47-011044-003	Chain Gear with Toothed Wheel and Bearing Complete	63.	47-013872-004	Chain Tool
			64.	47-013873-004	Elevator Chain Repair Kit (includes 10 pins)
			65.	11-053577-000	Rubber Bumper
			66.	*47-273835-009	Ejector Flap Rebuild Kit

N.A. = No Longer Available

* Includes Index Nos. 1, 2, 17, 26, 29, 44, 45, 46, 47, 48 & 50

Elevator Drive/Lift Assembly



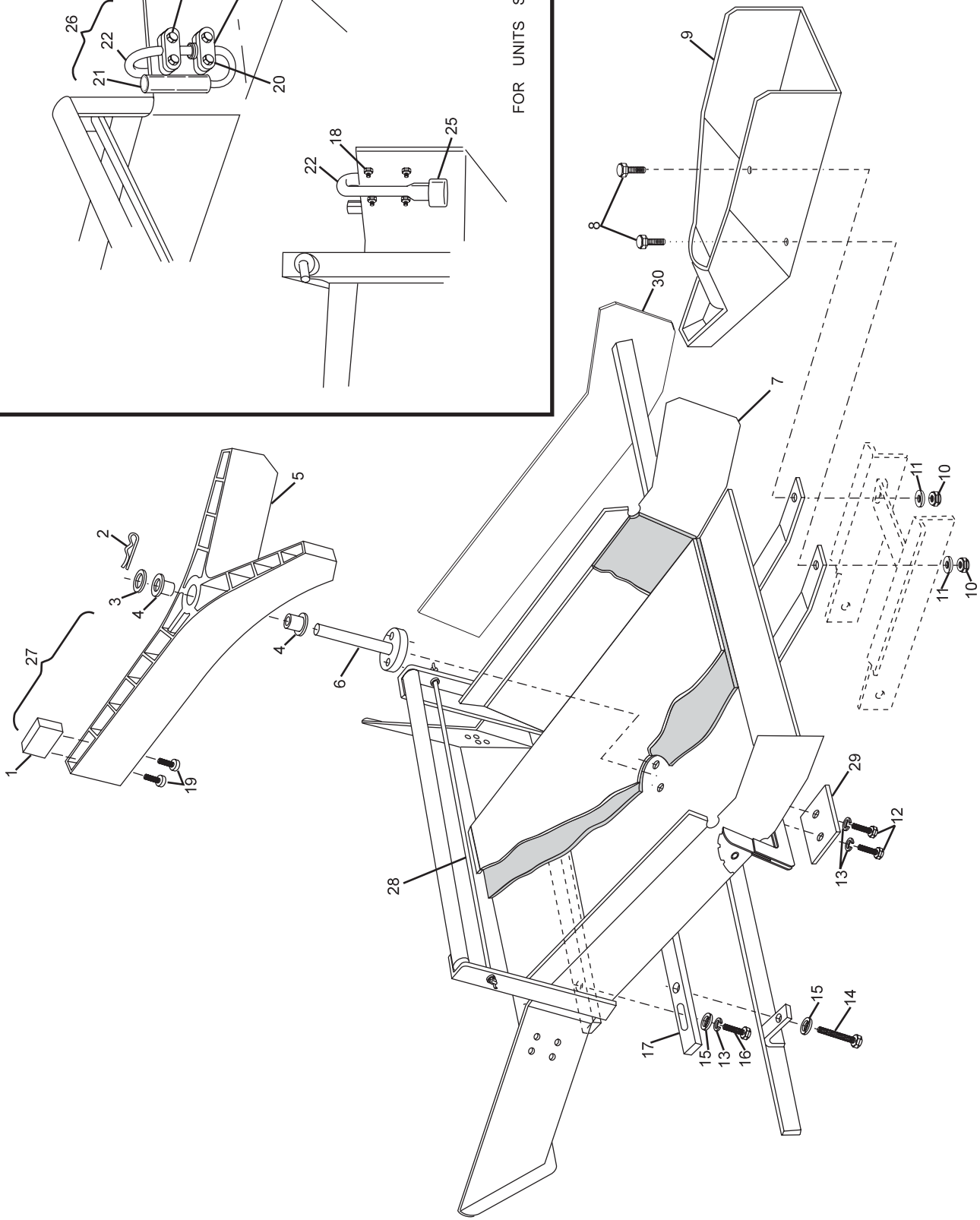
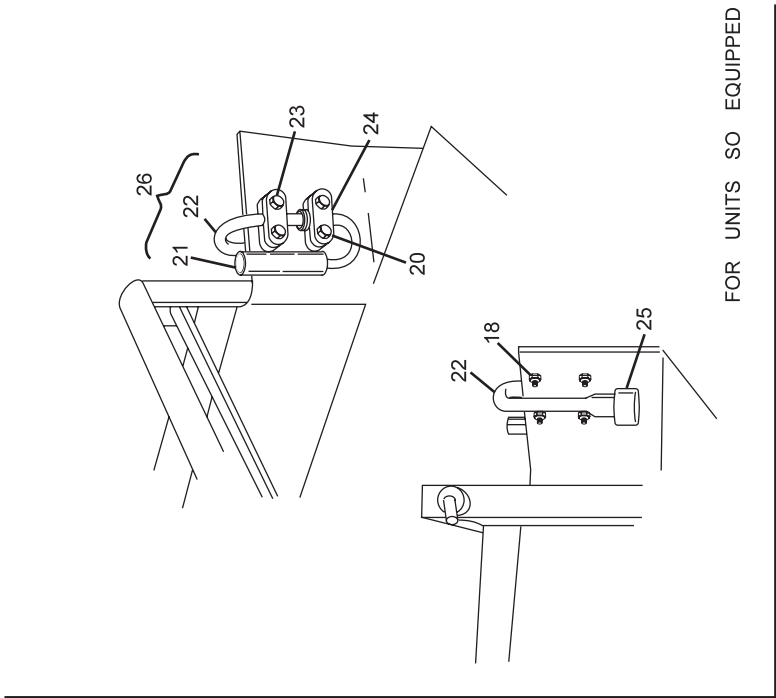
Elevator Drive/Lift Assembly

Index No.	Part No.	Description
1.	47-012272-004	Counter Weight
2.	11-054301-001	Hitch Pin (3 mm x 60 mm)
3.	11-052024-001	Flat Washer (14 mm x 30 mm x 1.8 mm)
4.	47-012273-004	Bushing
5.	47-012215-001	"Y" Switch
6.	47-012596-000	Flipper Shaft
7.	47-012628-000	Dual Feed Pin Chute w/o "Y" Switch & Deflector Shoe (nose block)
8.	11-051015-001	Hex Hd. Cap Screw (8 mm x 25 mm)
9.	47-012263-001	Deflector Shoe
10.	11-051744-001	Locknut (8 mm)
11.	11-052003-001	Flat Washer (8.4 mm x 17 mm x 1.6 mm)
12.	11-051019-001	Hex Hd. Cap Screw (10 mm x 25 mm)
13.	11-051771-001	Lockwasher (10 mm)
14.	11-051057-001	Hex Hd. Cap Screw (10 mm x 60 mm)
15.	11-052018-001	Flat Washer (10.5 mm x 21 mm x 2 mm)
16.	11-051005-001	Hex Hd. Cap Screw (10 mm x 20 mm)
17.	47-012260-003	Cross Brace
18.	11-051742-001	Locknut (5 mm)
19.	11-051514-001	Socket Hd. Cap Screw (5 mm x 25 mm)
20.	11-051004-001	Hex Hd. Cap Screw (5 mm x 25 mm)
21.	N.A.	Plastic Tube
22.	N.A.	Stopper Arm (left-hand)
	47-013640-003	Stopper Arm (right-hand; shown)
23.	11-051002-001	Hex Hd. Cap Screw (5 mm x 30 mm)
24.	46-030120-004	Bearing
25.	47-013742-004	Plastic Ring
26.	47-013599-004	Flipper Stopper Assembly Complete (left-hand)
	*47-013600-004	Flipper Stopper Assembly Complete (right-hand)
27.	N.A.	"Y" Switch Assembly Complete
28.	11-053583-000	Rubber Cord
29.	47-012255-004	Plate
30.	N.A.	Pin Chute Repair Plate (right-hand), ten pin side
	47-012621-000	Pin Chute Repair Plate (left-hand), seven pin side

N.A. = No Longer Available

** Not Illustrated*

Dual Feed Pin Chute Assembly



Dual Feed Pin Chute Assembly

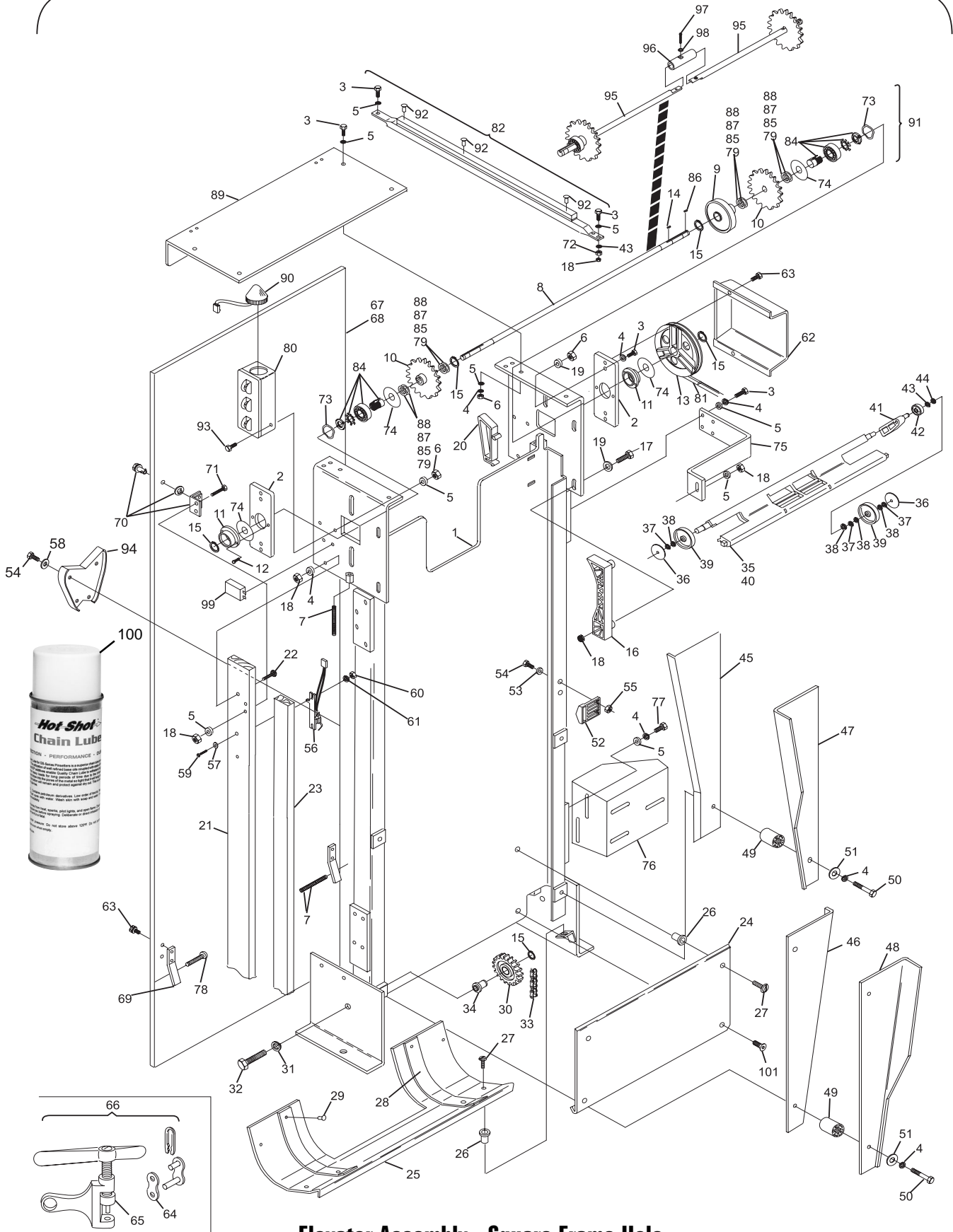
Intentionally Blank

Intentionally Blank

Index No.	Part No.	Description	Index No.	Part No.	Description
1.	47-013971-001	Elevator Frame Complete	51.	11-052031-001	Flat Washer (9 mm x 40 mm x 2.5 mm)
2.	47-014016-003	Bearing Plate	52.	47-014060-003	Ejector
3.	11-051010-001	Hex Hd. Machine Screw (8 mm x 20 mm)	53.	11-052008-001	Flat Washer (6.4 mm x 12.5 mm x 1.6 mm)
4.	11-051770-001	Lockwasher (8 mm)	54.	11-051018-001	Hex Hd. Machine Screw (6 mm x 20 mm)
5.	11-052003-001	Flat Washer (8.4 mm x 17 mm x 1.6 mm)	55.	11-051743-001	Locknut (6 mm)
6.	11-051704-001	Hex Nut (8 mm)	56.	47-243027-004	Switch
7.	11-054425-000	Set Screw (8 mm x 80 mm)	57.	99-050234-004	Switch Plate
8.	N.A.	Drive Shaft	58.	11-052037-001	Flat Washer (6.4 mm x 18 mm x 1.6 mm)
9.	47-014018-003	Shovel Guide Wheel	59.	11-052213-001	Slotted Machine Screw (4 mm x 40 mm)
10.	47-013931-003	Chain Sprocket (upper)	60.	11-051741-001	Locknut (4 mm)
11.	47-014329-003	Flange	61.	11-052025-001	Flat Washer (4.3 mm x 9 mm x 0.8 mm)
12.	11-054450-000	Self-Tapping Screw (6 mm x 16 mm)	62.	47-013949-001	Pulley Guard (metal)
13.	47-013956-003	V-Belt Pulley	63.	11-054451-000	Self-Tapping Screw (6 mm x 10 mm)
14.	11-053491-000	Key (5 mm x 5 mm x 20 mm)	64.	47-013871-004	Master Link with Long Pin
15.	11-051852-001	Retaining Ring (17 mm)		11-600500-000	Standard Master Link
16.	47-014017-003	Shovel Guide	65.	47-013872-004	Chain Tool
17.	11-051053-001	Hex Hd. Machine Screw (8 mm x 40 mm)	66.	47-013873-004	Elevator Chain Repair Kit
18.	11-051744-001	Locknut (8 mm)	67.	47-013983-003	Elevator Rear Guard Only
19.	11-052006-001	Flat Washer (8.4 mm x 20 mm x 2 mm)	68.	47-013990-002	Elevator Rear Guard Complete
20.	47-013951-003	Wedge Guide	69.	47-013652-004	Pin Plate (lower)
21.	47-013954-003	Wooden Chain Guide (rear)	70.	47-013952-004	Camloc Fastener Assembly
22.	11-052615-001	Lag Screw (8 mm x 35 mm)	71.	11-051026-001	Hex Hd. Machine Screw (8 mm x 40 mm)
23.	47-013953-003	Wooden Chain Guide (front)	72.	11-051703-001	Hex Nut (10 mm)
24.	47-013913-002	Damper Guide	73.	47-014331-004	Spring Shim Washer
25.	47-013946-002	Lower Pan Guide	74.	47-014327-004	Seal (Washer)
26.	11-135400-000	Flex Loc Nut	75.	47-014354-003	Elevator Bracket
27.	11-051881-001	Slotted Machine Screw (8 mm x 30 mm)	76.	47-024036-002	Mounting Bracket
28.	47-013912-004	Slide Band	77.	11-051038-001	Hex Hd. Machine Screw (8 mm x 16 mm)
29.	11-053678-000	Rivet	78.	11-051883-001	Slotted Truss Hd. Machine Screw (8 mm x 50 mm)
30.	47-011053-004	Deflection Chain Gear with Bearing Complete	79.	11-052053-001	Flat Washer
31.	11-051772-001	Lockwasher (12 mm)	80.	47-243071-004	Mechanic's Switch Assembly
32.	11-051062-001	Hex Hd. Machine Screw (12 mm x 25 mm)	81.	11-053905-000	V-Belt (1900 mm)
33.	47-014008-003	5/8" Chain with Shovel Pins Complete (3556 mm long)	82.	47-084015-003	Cable Channel Support Assembly
34.	47-011130-004	Bearing Bolt	83.	N.A.	Elevator Assembly Complete
35.	47-013532-009	Pin Shovel Complete	84.	11-050150-000	Cone Bearing Assembly
36.	47-011241-004	Spacer Washer (40 mm x 5.1 mm)	85.	11-054105-001	Shim Washer
37.	11-051851-001	Retaining Ring (12 mm)	86.	11-053501-000	Key
38.	11-052001-001	Flat Washer (12 mm x 16 mm x 2 mm)	87.	11-052057-001	Flat Washer
39.	47-011047-004	Nylon Track Wheel (large)	88.	11-054106-001	Shim Washer
40.	47-011049-001	Pin Shovel Only	89.	47-014770-002	Guard (GS-10/GS-92)
41.	47-011048-004	Pivoting Lever	90.	47-014687-004	Trouble Light Assembly
42.	47-011046-004	Nylon Track Wheel (small)		*47-223170-000	Lamp Only
43.	11-052018-001	Flat Washer (10.5 mm x 21 mm x 2 mm)	91.	47-014766-009	Elevator Shaft Kit (square frame hole, two pieces)
44.	11-051855-001	Retaining Ring (10 mm)	92.	11-053660-000	Rivet (3.2 mm x 7.4 mm)
45.	47-013993-001	Pin Deflector (right-hand, rear)	93.	11-054452-000	Hex Hd. Machine Screw (5 mm x 10 mm)
46.	47-013994-001	Pin Deflector (left-hand, rear)	94.	47-014761-003	Centering Guides (centering guides)
47.	47-013991-001	Pin Deflector (right-hand, front)	95.	47-014756-003	Split Shaft Assembly
48.	47-013992-001	Pin Deflector (left-hand, front)	96.	N.A.	Split Shaft Coupler
49.	47-014009-004	Spacer	97.	11-051526-001	Screw (6 mm x 30 mm)
50.	11-051075-001	Hex Hd. Machine Screw (8 mm x 23 mm)	98.	11-051769-001	Lockwasher (6 mm)
			99.	47-225160-004	Frame Counter
			100.	47-862803-000	Chain Lube (spray can)
			101.	11-052928-001	Flat Hd. Socket Screw (M6 x 10 mm)

N.A. = No Longer Available
* Not Illustrated

Elevator Assembly - Square Frame Hole Short Pit Machines Series 43 and Above



**Elevator Assembly - Square Frame Hole
Short Pit Machines Series 43 and Above**

Index

No.	Part No.	Description
1.	11-051010-001	Hex Hd. Machine Screw (8 mm x 20 mm)
2.	11-052003-001	Flat Washer (8.4 mm x 17 mm x 1.6 mm)
3.	47-014770-002	Guard
4.	11-051741-001	Nut (4 mm, GS-92)
	11-051744-001	Nut (8 mm, GS-96)
5.	11-055025-001	Screw (4 mm x 16 mm, GS-92)
	11-051038-001	Screw (8 mm x 16 mm, GS-96)
6.	47-014267-003	Mounting Angle
7.	N.A.	Mounting Plate
8.	11-051770-001	Lockwasher
9.	47-013953-003	Wooden Chain Guide (front)
10.	11-052221-001	Slotted Machine Screw (3 mm x 4 mm)
11.	11-051704-001	Nut (8 mm)
12.	47-014917-009	Micro Switch Complete with Mounting Plate and Guard (GS-96 and prior)
	47-014918-003	Micro Switch Only (GS-98)
13.	N.A.	Guard Plate
14.	11-051746-001	Nut (3 mm)
15.	11-051743-001	Hex Locknut (6 mm)
16.	47-014761-003	Centering Guide (upper)
17.	11-051018-001	Hex Hd Machine Screw (6 mm x 20 mm)
18.	11-051769-001	Lockwasher (6 mm)
19.	47-014758-001	Elevator Frame Complete (GS-92) - special order
	47-014254-001	Elevator Frame Complete (GS-96) - special order
20.	11-051038-001	Screw (8 mm x 16 mm)
21.	N.A.	Shaft
22.	47-013949-001	Pulley Guard (GS-92) - metal
23.	47-014974-003	Pulley Guard (GS-96 & above) - plastic
24.	11-051010-001	Hex Hd Machine Screw (8 mm x 20 mm, GS-92)
	11-051015-001	Hex Hd Machine Screw (GS-96)
25.	47-014238-003	CrossBar
26.	11-053905-000	V-Belt (1900 mm)
27.	47-014752-003	Flange
28.	47-014751-003	Bearing Plate
	47-015098-003	Plastic Bearing Flange
29.	47-014800-004	Rubber Bumper
30.	47-014239-004	Support Bar
31.	11-054450-000	Self-Tapping Screw (6 mm x 16 mm)
32.	47-014765-002	Pulley with Clamp
33.	47-014255-004	Shock Pad
34.	*N.A.	Damper Plate
35.	11-135400-000	Fastener
36.	47-093874-004	Clamp Only
37.	11-051035-001	Hex Hd. Cap Screw (6 mm x 16 mm)
38.	**47-015068-003	Shaft Assembly Complete (GS-96 and above)
39.	11-051881-001	Truss Hd. Mach. Screw (8 mm x 30 mm)
40.	11-052037-001	Flat Washer (6.4 mm x 18 mm x 1.6 mm)
41.	47-243071-004	Mechanic's Remote Box w/ Cable (Consolidated Electronics)
	47-245422-003	Mechanic's Remote Box w/ Cable (Nexgen Electronics)
42.	11-054452-000	Hex Hd. Machine Screw (5 mm x 10 mm)
43.	47-014687-004	Trouble Light Assembly
	***47-223170-000	Lamp Only
	***47-015646-004	Lamp Only - Nexgen (24 Volts)
44.	11-052928-001	Flat CTS. Head Screw (6 mm x 10 mm)
45.	11-430015-000	Bearing
46.	47-014252-004	Shovel Guide Wheel
47.	47-014924-003	Gear (Plastic)
48.	47-015643-001	Elevator (Complete) - special order
49.	47-013954-003	Wooden Chain Guide (rear)
50.	11-053508-000	Key
51.	47-014354-003	Z-Bracket
52.	11-051744-001	Nut (8 mm)

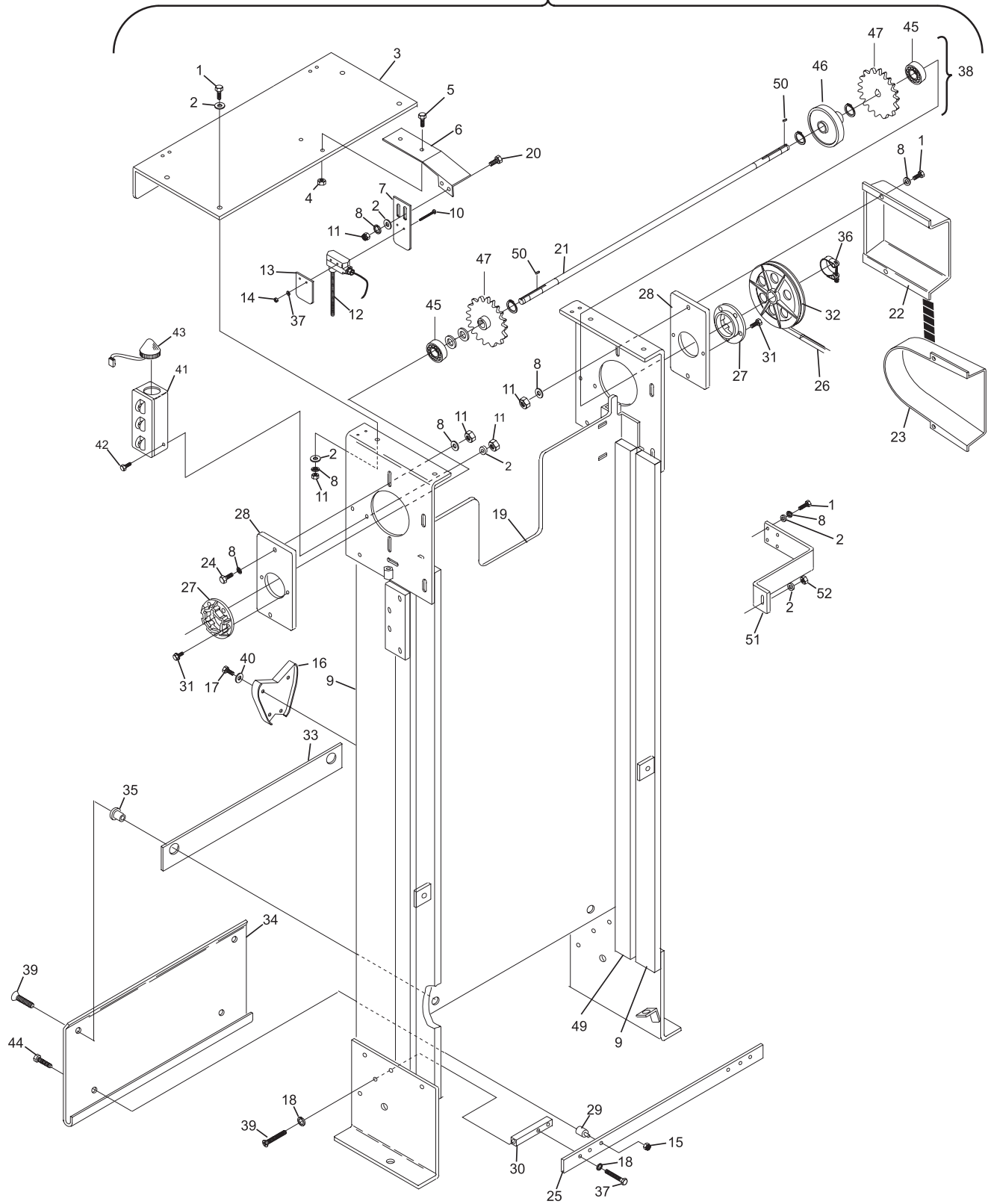
N.A. = No Longer Available

* To order entire Damper Plate kit, order 47-014696-009 (includes index nos. 1, 2, 18, 25, 29, 30, 33, 34, 35, 37, 39, and 40).

** Also order Plastic Bearing Flange (47-015098-003) and 2 each Wave Springs, 47-014331-004.

*** Not Illustrated

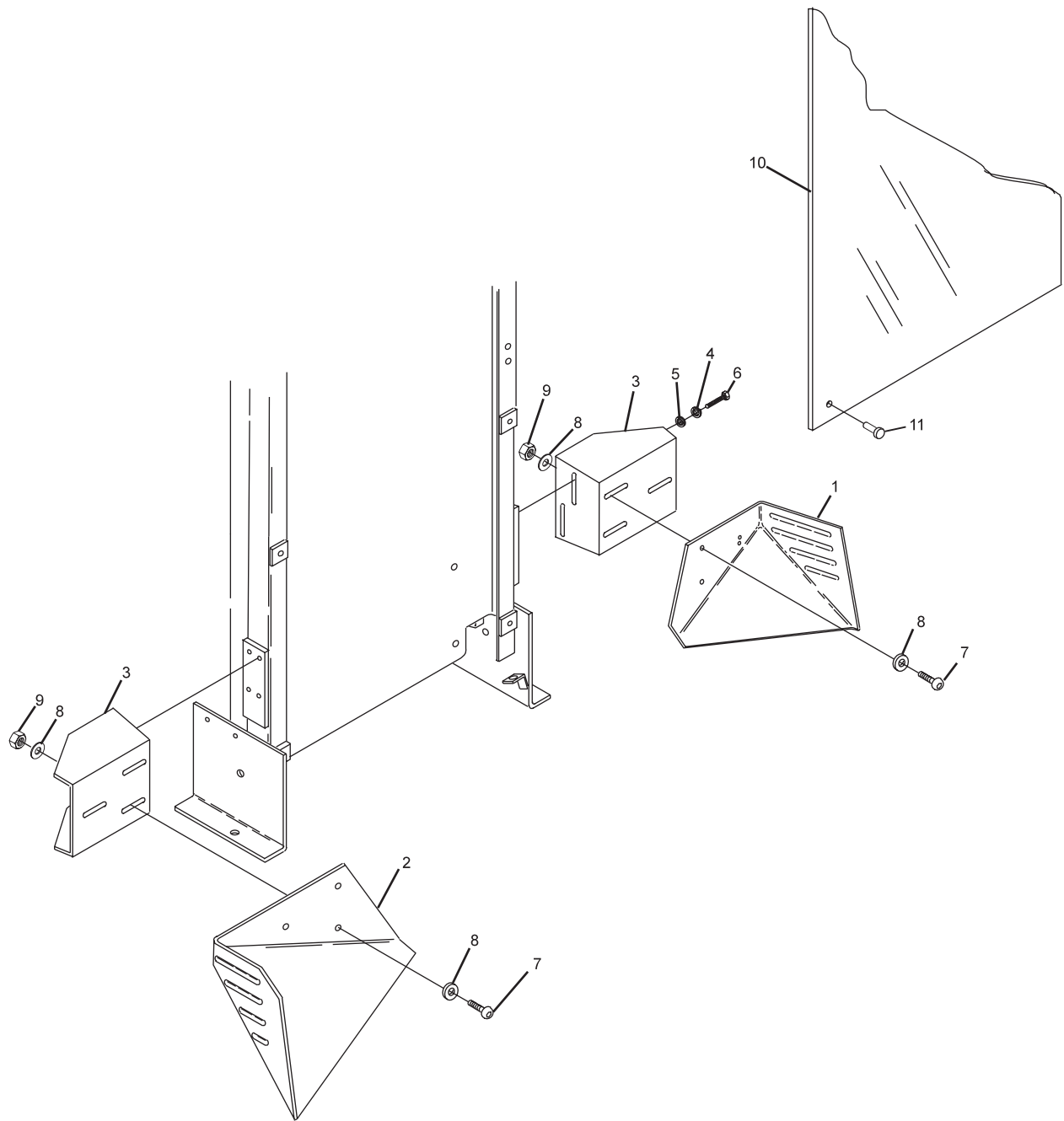
Elevator Assembly - Round Frame Hole Short Pit Machines Series 43 and Above



**Elevator Assembly - Round Frame Hole
Short Pit Machines Series 43 and Above**

Index No.	Part No.	Description
1.	47-023986-001	Pin Deflector Board (right-hand)
2.	47-023987-001	Pin Deflector Board (left-hand)
3.	47-024036-002	Mounting Bracket
4.	11-051770-001	Lockwasher (8 mm)
5.	11-052003-001	Flat Washer (8.4 mm x 17 mm x 1.6 mm)
6.	11-051038-001	Hex Hd. Machine Screw (8 mm x 16 mm)
7.	11-054801-001	Hex Hd. Socket Button Hd. Machine Screw (8mm x 20mm)
8.	11-052019-001	Flat Washer (8.4 mm x 25 mm x 2 mm)
9.	11-051744-001	Locknut (8 mm)
10.	47-023923-003	Lexan Division Barrier
11.	47-013952-004	Camloc Fastener Assembly

Pin Deflector Boards
Short Pit Machines Series 43 and Above



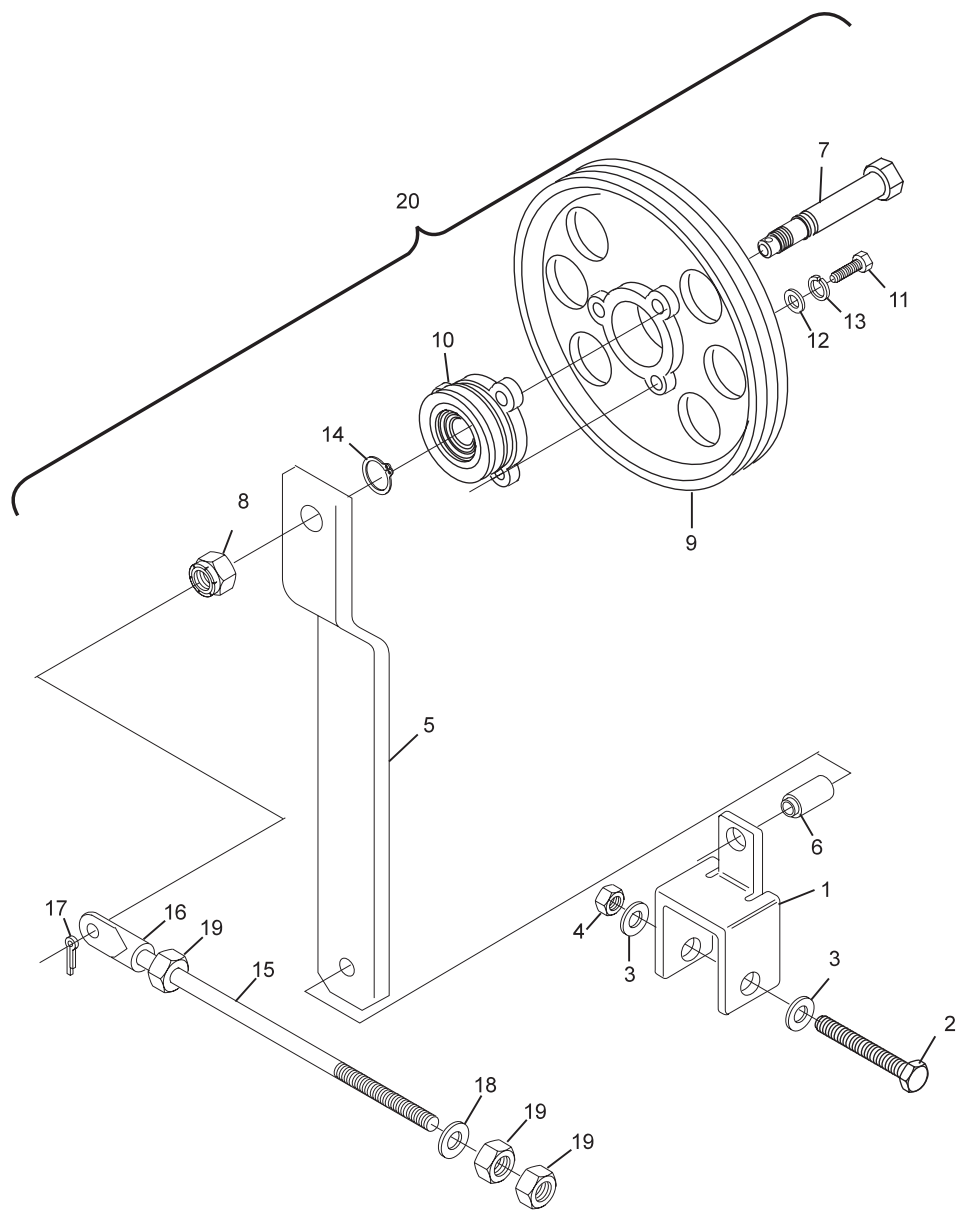
Pin Deflector Boards
Short Pit Machines Series 43 and Above

Index

No.	Part No.	Description
1.	N.A.	Support Bracket (order index # 20)
2.	11-051064-001	Hex Hd. Machine Screw (8 mm x 65 mm)
3.	11-052006-001	Flat Washer (8.4 mm x 20 mm x 2 mm)
4.	11-051744-001	Locknut (8 mm)
5.	47-014058-003	Lever
6.	11-052691-001	Rolled Pin (10 mm x 26 mm)
7.	N.A.	Bearing Bolt
8.	11-051745-001	Locknut (10 mm)
9.	47-022410-003	Round Belt Pulley
10.	47-014054-003	V-Belt Adaptor Pulley
11.	11-051028-001	Hex Hd. Machine Screw (6 mm x 30 mm)
12.	11-052008-001	Flat Washer (6.4 mm x 12.5 mm x 1.6 mm)
13.	11-051769-001	Lockwasher (6 mm)
14.	11-051852-001	Retaining Ring (17 mm)
15.	47-013930-004	Threaded Rod
16.	47-013916-004	Rod End Adaptor
17.	11-051793-001	Cotter Pin (2 mm x 16 mm)
18.	11-052028-001	Flat Washer (10.5 mm x 25 mm x 2 mm)
19.	11-051703-001	Hex Nut (10 mm)
20.	47-014053-001	Elevator Belt Tensioner Assembly

N.A. = No Longer Available

**Elevator Belt Tensioner Assembly
Short Pit Machines Series 43 and Above**



**Elevator Belt Tensioner Assembly
Short Pit Machines Series 43 and Above**